

NSF Application Form [text to enter into form]:

1. Contact information
 - First Name: Jolene
 - Last Name: Haas
 - Phone Number: (206) 431-1582
 - Email address: accounting@duwamishtribe.org
2. Zip code: 98106
3. Project Title: Duwamish Longhouse Pedestrian Safety & Accessibility Project
4. Project Location: 4705 West Marginal Way SW
5. Problem Statement: The Duwamish Longhouse and Cultural Center of the Duwamish Tribe has limited parking and no transit service. Many people coming to events park across the street, at Herring's House Park and T-107 Park (*T!ula'ltu*), or north of the Longhouse at lots on the east and west sides of the street. Other people come by bike using the Duwamish Trail from West Seattle or South Park. The approach from these locations is not safe, comfortable, or ADA accessible. The street has five lanes, including heavy truck traffic, with a posted speed limit of 40 mph. Actual speeds often exceed 50 mph. There is only a dirt path on the west side for walking. Some community events use both the Longhouse and the park.
6. Solution Statement:
 - a. Marked crosswalk across West Marginal Way SW with pedestrian-activated half-signal or rapid flashing beacons and warning signs, located at the north entry drive to Herring's House Park's parking lot, **or** at SW Alaska St, **or** at the entry drive to T-107 Park at SW Edmunds St.
 - b. Paved sidewalk on west side of West Marginal Way SW from SW Alaska Street to SW Idaho Street.
7. Additional Information *Optional (attachment 1): Submittal statement from the Duwamish Tribe and endorsing community organizations
8. Additional Information *Optional (attachment 2): Map of location with notes
9. Additional Information *Optional (attachment 3): Photos of conditions
10. Additional Information *Optional (attachment 4): North Delridge Action Plan excerpt
11. Additional Information *Optional (attachment 5): Still images and link to online video from drone flight, if available by application date. (Could be added later)

* Additional information may be photos, graphics, designs or other information.

The Duwamish Longhouse is the cultural center for indigenous People in the Coast-Salish region – a home to our spiritual practices and lifeways, as well as ceremonies and community gatherings. We invite you in with open and raised arms. Come and learn about our culture and living history.

However, the Duwamish Longhouse on West Marginal Way SW at SW Alaska Street has limited parking and no transit service. Many people coming to events park across the street, at Herring’s House Park and T-107 Park (T!ula!tu). For large events, the Tribe has arranged to use the bus barn lot north of Herring’s House Park and the Parks Department lot at SW Idaho St on the west side of West Marginal Way SW. Other people come by bike using the Duwamish Trail from West Seattle or South Park. The approach from these locations is not safe, comfortable, or ADA accessible. The street has five lanes, with heavy truck traffic, a posted speed limit of 40 mph, and actual speeds often exceeding 50 mph. There is only a dirt path on the west side for walking. Some community events use both the Longhouse and the park. The park is a listed National Register archeological site of great importance to the Tribe.

Adding a sidewalk on the west side of the street from SW Alaska to SW Idaho Street and a marked crosswalk with warning signs and pedestrian-activated signal or flashing beacons would make a significant safety and accessibility improvement for people arriving by car, bike or on foot to the Longhouse.

Submitted by: Jolene Hass, Treasurer/Grants Administrator, **The Duwamish Tribe**

Endorsed by:

Delridge Neighborhoods Development Association
Duwamish River Cleanup Coalition/TAG
Duwamish Valley Safe Streets
ECOSS
Georgetown Community Council
Highland Park Action Committee

Seattle Bicycle Tours
Seattle Neighborhood Greenways
South Park Neighborhood Association
Sustainable West Seattle
West Duwamish Greenbelt Trails Group
West Seattle Bike Connections



Duwamish Longhouse Pedestrian Safety & Accessibility

(4705 West Marginal Way SW (SW Alaska St to SW Idaho St))



Parking lot used by arrangement for community events at Duwamish Longhouse

Paved sidewalk needed on west side of street from SW Alaska to SW Idaho.

Existing Duwamish Trail Crossing. Crosswalk and flashing beacon

Parking lot used by arrangement for community events at Duwamish Longhouse

Crosswalk with signal or flashing beacons and signs needed at north drive to Herring's House Park parking, or at SW Alaska St, or at T-107 Park

Duwamish Longhouse

T!ula'ltu
(Herring House)

Terminal 107 Park





People crossing from Longhouse to park, trail and car parking. 40 mph posted speed limit. Four traffic lanes and a center turn lane. No warning to drivers.



Lots of heavy truck traffic.



Warning signs and flashing beacons or signal are needed to call attention to pedestrians crossing.



There is only a dirt path on the west side of West Marginal from SW Alaska to SW Idaho. Not ADA accessible, or safe for anyone.



Many events end after dark. It is difficult for drivers to see pedestrians crossing without a marked crosswalk and signal or flashing beacons.



Visitors park at Herring's House and T-107 Parks across from the Longhouse.



An ADA accessible sidewalk is needed on the west side of West Marginal for access to the Duwamish Trail Route and parking lots.



Pedestrians cross here at SW Alaska St from Longhouse to parking at Herring's House Park.



The unpaved path on west side of West Marginal gets muddy, overgrown and blocked by vehicles..



Volunteer crossing guard for community Halloween Party. Scary traffic!



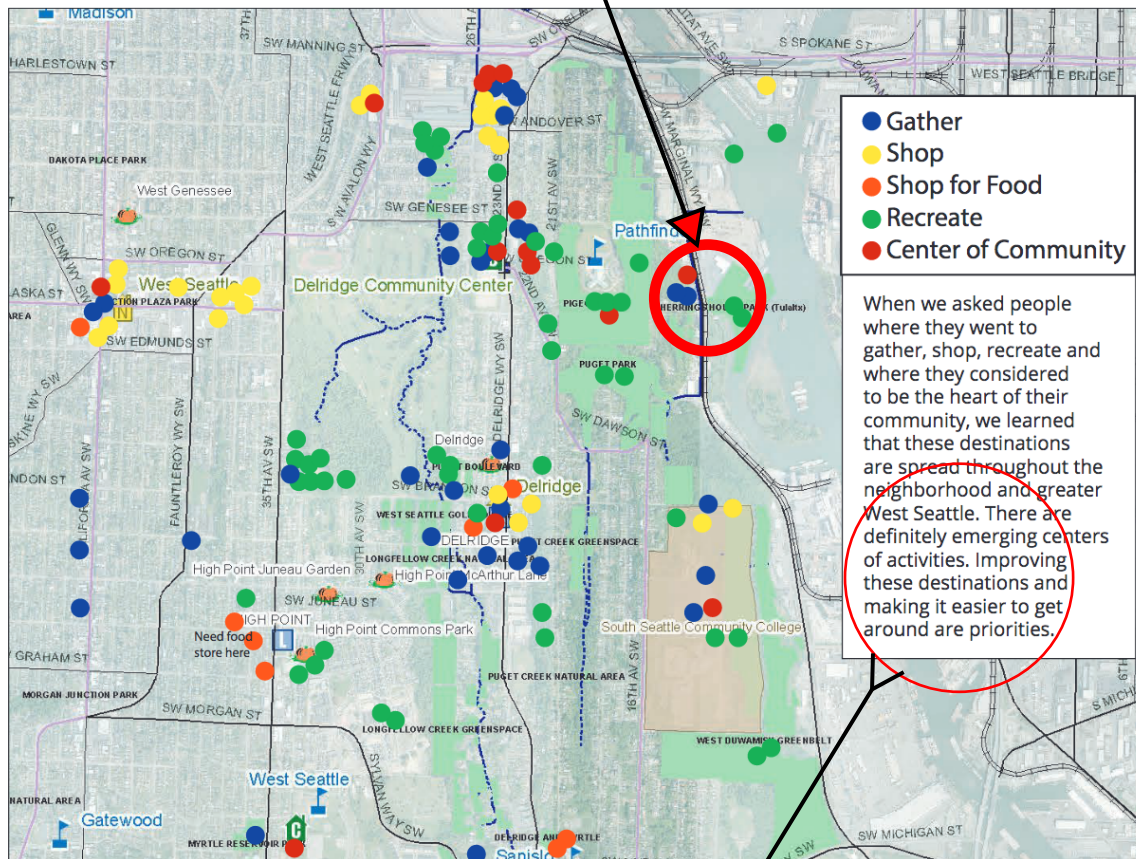
The Duwamish Tribe welcomes the entire community to a wide variety of programs and events..

Community input to the new North Delridge Action Plan identifies the **Duwamish Longhouse** as a place to gather, and as a center of community.

Herring's House and T-107 Parks on the bank of the Duwamish River are the site of a former Duwamish Tribe longhouse village, and are noted in the action plan as places of recreation. They have great significance for the Duwamish Tribe, and are a focus of volunteer work to restore the river shoreline and natural habitat.

Together, these places are considered at *the heart* of the community.

MAPPING CONCENTRATIONS OF ACTIVITY



"Improving these destinations and making it easier to get around are priorities."

From the **North Delridge Action Plan**,
Seattle Office of Planning & Community Development, 2018.

Neighborhood Street Fund Application
Duwamish Longhouse Pedestrian Safety & Accessibility Project
4705 West Marginal Way SW
Attachment 5

Duwamish Longhouse Safety & Accessibility - Drone Video, Annotated

Videographer *John Carter of Media*

Produced by John Carter with Dr. Jeffrey Perkins for the Duwamish Tribe.

Length approximately 1 minute.

<https://vimeo.com/301116975>

password: **roads**